

TRH022 Temperature and Humidity Transmitter

FEATURES

- Using high-precision sensors and master control, it has good long-term stability and anti-interference ability
- The shell design is compact and beautiful, and the LCD backlight is used for dual display of temperature and humidity, which is convenient for use.
- The power supply and output have overvoltage and reverse connection protection functions, and have a high protection level up to IP65
- The temperature range can be changed by dip switch. If output is RS485, Device Address and Baud Rate can be revised by dip switch as well.



TRH022 series temperature and humidity transmitter is a transmitter specially designed for industrial applications . It has three installation methods : wall-mounted , pipeline , and split . The three output modes of current , voltage , and RS485 are optional . The on-site adaptability strong , and the terminal design is suitable for rapid installation . It can be widely used in computer rooms , HVAC , buildings , storage vegetable greenhouses , farms and other places where temperature and humidity measurement is required.

SPECIFICATION

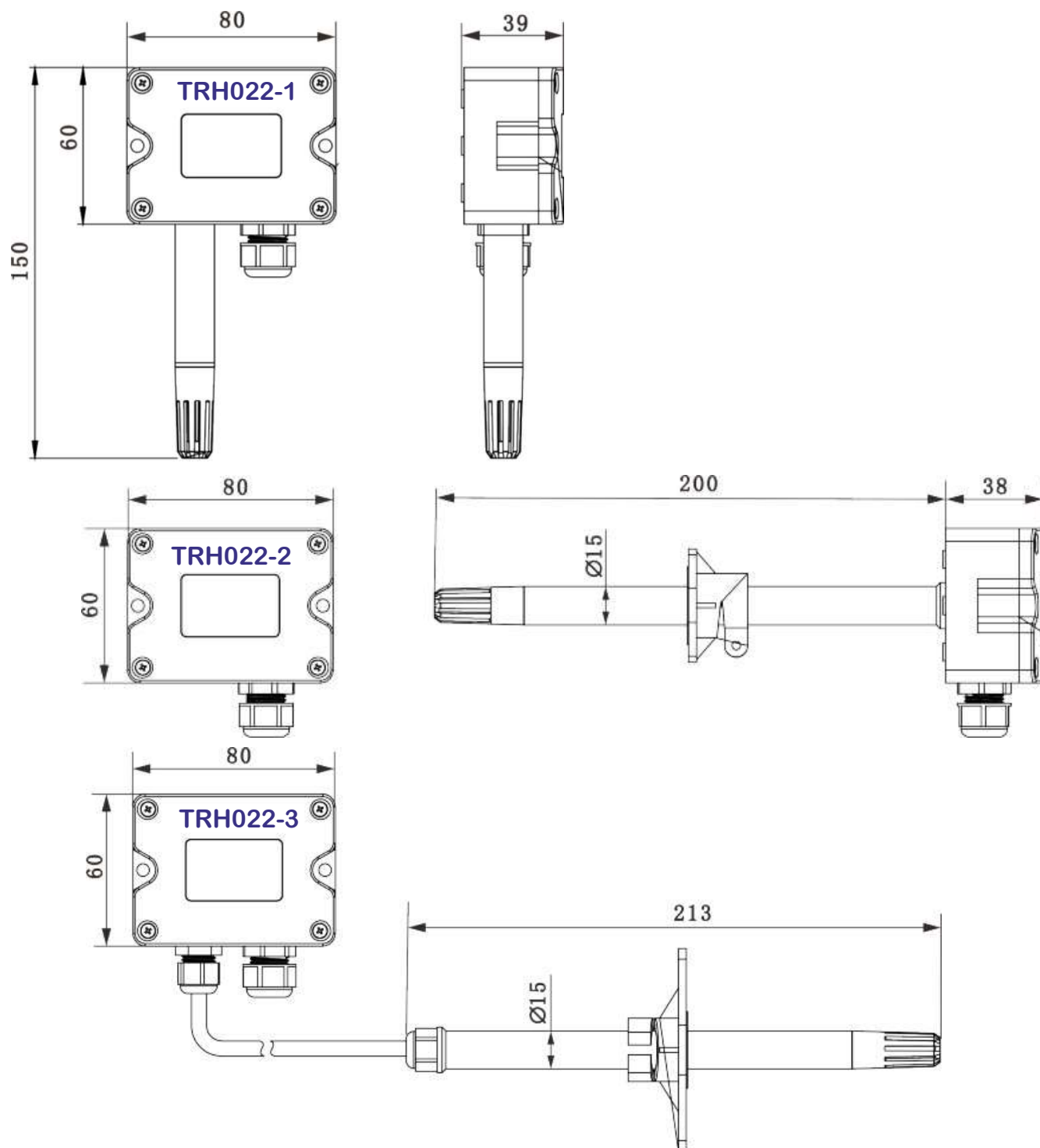
1)Relative humidity

Sensor	Digital type
Measuring Range	0%~100%RH
Output	Output : RS485/Modbus, 0~10VDC, 4~20mA optional
Accuracy	± 3%@ 20°C & 20~80%RH
Response time	≤10s (20°C, slow flow air)

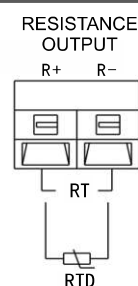
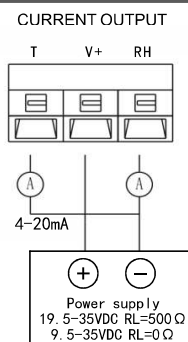
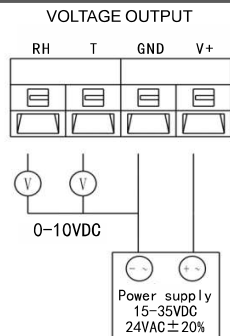
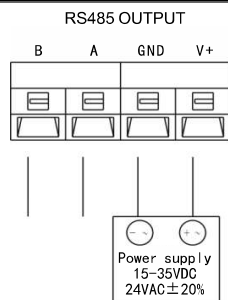
2)Temperature

sensor	Digital type or thermal resistance , see Order Ref No.	
Measuring Range	0~50°C, -20~60°C etc	
Output	4~20mA, 0~10VDC, RS485/Modbus Optional	
Thermal Resistance	See Order Ref No. and Thermal Resistance Indexing Table	
Accuracy	Digital type: ±0.3°C@0~60°C Thermal resistance:typical±0.2~0.4°C@25°C, see Order Ref No.	
Power Supply	Voltage type/485 type: 15~35VDC/24VAC±20% (AC power supply requires isolated power supply)	Current type:19.5~35VDC (RL=500Ω)/ 9.5~35VDC (RL=0Ω)
Output Load	≤250Ω(Current type) , ≥2KΩ(Voltage type)	
Display	LCD display optional, with unit display and backlight (4~20mA without backlight)	
Shell Material	ABS housing, PC probe and high polymer filter	
Working Environment	-20~60°C,5%-95%RH(Non-condensing)	
Protection Grade	IP65	

mechanical characteristics



ELECTRICAL CONNECTION



Product installation

Step 1: punching 2- $\Phi 6$

Step 2: Insert the plastic expansion tube

Step 3: Place the temperature and humidity transmitter and fine-tune the position of the mounting holes

Step 4: Tighten the fixing screws

Step 5: Tighten the flat tail self-tapping screw

Step 1: punching

Step 2: Install the fixing flange

Step 3: Tighten the fixing screws

Step 4: Insert the temperature and humidity transmitter and fine-tune the position

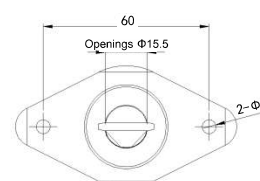
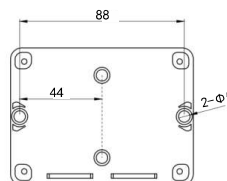
Step 5: Tighten the flat tail self-tapping screw

Step 1: punching

Step 2: Install the fixing flange

Step 3: Tighten the fixing screws

Step 4: Insert the temperature and humidity transmitter and fine-tune the position



Ordering information:

Code and description				Remark
TRH022-1	Wall-mounted temperature and humidity transmitter			Model
TRH022-2	Duct type temperature and humidity transmitter			
TRH022-1	Split type temperature and humidity transmitter			Accuracy
	3	±3%RH(0.3℃)		
		V10	0~10VDC(Three-wired)	Humidity output
		A4	4~20mA(Two-wired)	
		RS	RS485/Modbus	Temperature output
		V10	0~10VDC(Three-wired)	
		A4	4~20mA(Two-wired)	
		RS	RS485/Modbus	
		1	PT100, ±0.2℃@0℃	
		0	None (only Pt100)	Temperature range
		1	0~50℃	
		2	-20~60℃	
		8	Others (customer specified)	
		0	without display	Display
		1	with display	

N.I.F.: B-87969416



GUEMISA

C/ Del Electrodo, 68 Oficina-23
28522 Rivas Vaciamadrid (Madrid)
Tfno.: 91 764 21 00 - info@guemisa.com